



**Barrier-Free Cooler**



**MODEL:**  HACG8PV-NF  
 HACG8SS-NF

**GENERAL**

Energy-efficiency performance exceeds average market performance by 35%

Self-contained, high-efficiency refrigerated wall-mount water cooler is easily accessible for physically challenged individuals. Meets state and federal accessibility requirement, including Americans with Disabilities Act. Unit is certified to NSF/ANSI 61 & 372 and meets requirements of Safe Drinking Water Act. Unit provides 50° F water at 80° F inlet water and 90° F ambient.

**CABINET**

Stainless steel panels resist wear and corrosion. Durable satin finish helps hide water spots and fingerprints.

**COOLER TOP**

Non-corrosive stainless steel cooler top, no. 300 series with satin finish resists stains and corrosion and is easy to maintain. Anti-splash ridge reduces splatter. Contoured to insure proper drainage.

**BUBBLER**

Exclusive one-piece, chrome-plated two-stream mound-building bubbler with non-removable anti-squirt feature and integral hood insures a satisfying drink of water.

**PUSH BAR ACTUATION MECHANISM**

Self-closing light-touch push bars on front and sides with raised letters for the visually impaired.

**AUTOMATIC STREAM HEIGHT REGULATOR**

Self-closing assembly is located inside unit to prevent tampering. Unit resists corrosion and liming. A constant stream height is automatically maintained under line pressures that vary from 20 to 105 psi.

**INLET STRAINER**

Easily cleaned in-line strainer screen traps particles of 140 microns or larger before they enter the waterway.

**TEMPERATURE CONTROL**

Positive sensing thermostat for controlling temperature of storage tank water. Factory set at 50° F Adjustable ± 5° F.

**STORAGE TANK**

Non-pressurized stainless steel evaporator/storage tank for long life. Waterways are certified to NSF/ANSI 61, far exceeding the requirements of the Safe Drinking Water Act.

**REFRIGERATION SYSTEM**

High-efficiency, hermetically sealed, positive start compressor with lifetime lubrication and built-in overload protection, efficient capillary sizing, large capacity dryer-strainer, and self-lubricated fan cooled condenser. System uses R134a refrigerant. Protected by Halsey Taylor's Limited 5 Year Warranty

**VENTILATION**

Insure proper ventilation by maintaining 6" (152mm) minimum clearance from cabinet louvers to wall.

**SUGGESTED SPECIFICATIONS**

Shall include high-efficiency refrigeration system. Shall deliver 8.0 GPH of 50° F water at 90° F ambient and 80° F inlet water. Shall have stainless steel basin with removable drain strainer. Bubbler shall be two-stream, mound building type. Separate valve and automatic stream regulator shall be mounted within cabinet. Refrigeration system shall employ high efficiency, positive start compressor using R134A, non-pressurized tank with totally encapsulated insulation and be controlled by positive sensing thermostat. Shall have front and side push-bar water controls with raised lettering for the visually impaired. Cooler shall comply with ANSI 117:1 and ADA for visual and motion disabilities. The manufacturer shall certify the unit to meet the requirements of NSF/ANSI 61 & 372 and the Safe Drinking Water Act. Unit complies with ARI Standard 1010.

NOTE: Continued product improvement makes specifications subject to change without notice. See Halsey Taylor website for most current spec sheet.

JOB NAME: \_\_\_\_\_  
\_\_\_\_\_  
\_\_\_\_\_  
ENGINEER/CONTRACTOR NAME: \_\_\_\_\_  
APPROVAL: \_\_\_\_\_  
DATE: \_\_\_\_\_

HACG BARRIER-FREE SERIES								
Model No.	GPH Capacity Cooled to 50° F**				Base Rate Cap.	F.L. Amps	Shipping Weight lb.	Rated Watt Usage
	Ambient Air Temp							
	70°F	80°F	90°F†	100°F				
HACG8*-NF	9.7	8.8	8.0	7.2	8.0	2.8	67	260

\* Finish indicator: PV for Platinum Vinyl and SS for Stainless Steel cooler panels

\*\*With projector service and tap water at 80° F

† UL listed and complies with ARI Standard 1010

Trap and service stop not included



**HACG8PV-NF,  
HACG8SS-NF**

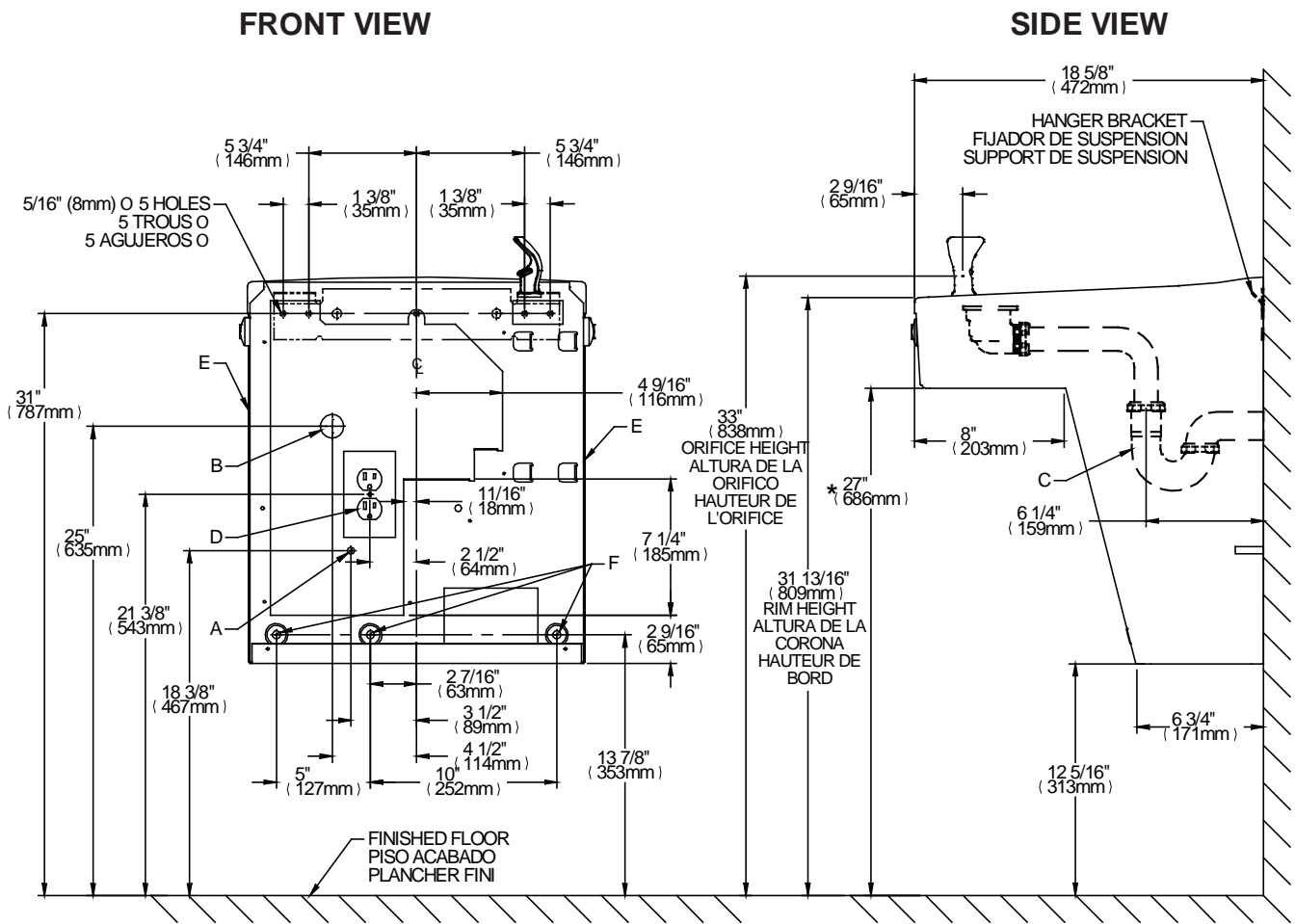
**High-Efficiency, Single Barrier-Free**

(CONTINUED)

**OPERATING PRESSURES:**  
Supply water - 105 psi maximum

**ELECTRICAL**  
Furnished with plug-in, 3-wire grounding type service cord. Standard 120 volt, 60 Hz, single phase. Install 120-volt receptacle, rated at 15-amp minimum, to receive 3-wire parallel blade grounding type male plug.

Trap and service stop not included.



**REDUCE HEIGHT BY 3" FOR INSTALLATION OF CHILDRENS ADA COOLER \*ADA REQUIREMENT**

**LEGEND**

- A = RECOMMENDED WATER SUPPLY LOCATION. SHUT OFF VALVE (NOT FURNISHED) TO ACCEPT 3/8 O.D. UNPLATED COPPER TUBE.
- B = RECOMMENDED LOCATION FOR WASTE OUTLET 1-1/4" O.D. DRAIN
- C = 1-1/4 TRAP NOT FURNISHED\*\*
- D = ELECTRICAL SUPPLY (3) WIRE RECESSED BOX
- E = INSURE PROPER VENTILATION BY MAINTAINING 6" (152 mm) (MIN.) CLEARANCE FROM CABINET LOUVERS TO WALL.
- F = 7/16 BOLT HOLES FOR FASTENING UNIT TO WALL

